



DP2000

Automated Programming System

DP2000 is an automated programming system especially designed for tube/tape in & tape out. The system is equipped with a moving programming module and 4 nozzles to handle pick & placement of IC input, positioning, programming and IC output. With 4 nozzles functioning synchronously with the moving programming module, DP2000 easily achieves high throughput, 3,000 UPH. This unique and creative design already obtained a patent.



Features

◆ Dedicated for Tube or Tape in ; Tape out

1. Input : Tube and Tape
2. Output : Tape
3. Supported IC : EEPROM, NOR/NAND FLASH, Microcontroller...
4. Supported Package : DIP, SOP, SSOP, TSOP, PLCC, QFN, LQFP, BGA...

◆ High Expansibility

Able to built in 2 units of ProgMaster-S8 programmer and expand up to 16 programming sites. The system will not idle and decrease throughput when programming those chips with high density.

◆ Software Support NAND FLASH Bad Block Skip and Partition Programming

Each programming site functions independently. It only takes 30 seconds to program (P+V) 1Gb NAND FLASH.

◆ High Throughput

Achieve 3,000 UPH when SPI Flash density is 64Mbit and smaller.

◆ Fast & Accurate Positioning

Design dedicated Positioner for different IC package to handle positioning.

◆ Software Support Work Project

Press Start button to start programming after loading work project so operators will not load wrong file or select wrong IC part number.

◆ Support PSA & Heat Sealing

◆ Unique & Creative Design obtains a Patent

◆ Vertical & Horizontal Infrared Inspection

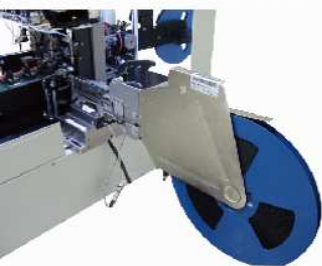
Check empty pocket and jammed component before taping.

◆ Optional Ink Marker

Different color available; support dot, character and number.

◆ Optional CCD-Camera

Check empty pocket and the position of pin 1 and mark.



Tape In



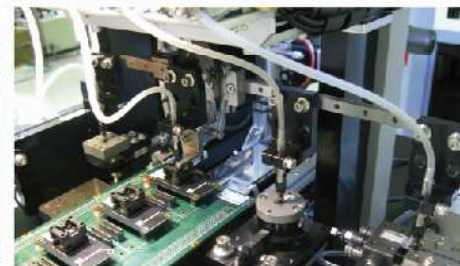
Tube In



CCD-Camera



Ink Marker



Nozzles & Programming Module

DP2000

Automated Programming System

Specification

Pick & Place System	Placement Accuracy	±0.02mm
	Pick & Place Device	Vacuum Nozzle*4
	Throughput	3,000 UPH
Positioning System	2 Units of Positioner For IC Input & Output	Dedicated Positioner for different package type
Transmission System	Drive Method	High performance servo motor
	Transmission	Ball screw & Cam mechanism
	Max Stroke	560mm
Input/Output System	Tube In	1. Manual Single-Tube In Loader 2. Automatic SOP IC Tube Loader ; Capacity : 35~40 tubes
	Tape In	1. Mechanical Tape Feeder ; Support 8~46mm tape width 2. Electrical Tape Feeder ; Support 8~46mm tape width
	Tape Out	Automatic Taping Machine ; PSA & Heat sealing ; Support 8~46mm tape width
Programming System	Programmer	ProgMaster *2
	Programming Site	2*4 or 2*8
	Supported IC	EEPROM, NAND/NOR FLASH, Microcontroller ... etc
	IC Package	SOP、SSOP、TSOP、PLCC、QFN、LQFP、BGA ... etc
Operation Environment	Input Voltage	200~245V / 50-60Hz
	Power Consumption	10A
	Air Flow	6 liter/hr
	Air Pressure	0.5 MPa (~5.0 kg/cm ²)
	Temperature & Humidity	Temperature : 22°C± 2 Humidity : 55 ~ 65 %
Dimension	Main Unit	W x D x H : 1610mm x 520mm x 1540mm
	Main Unit+Tube Loader	W x D x H : 1610mm x 1240mm x 1540mm
	Main Unit+Tape Feeder	W x D x H : 1610mm x 1640mm x 1540mm
	Weight	170 KG
Control System	PC O/S	Windows XP
	Display	19"LCD
	Input Devices	Keypad & Mouse
Marker	Ink Marker	Different color available ; support dot (1.5mm~2.0mm) 、 character and number (2mm x 3mm)

