

Product Name : SF600

Model Name : SF600

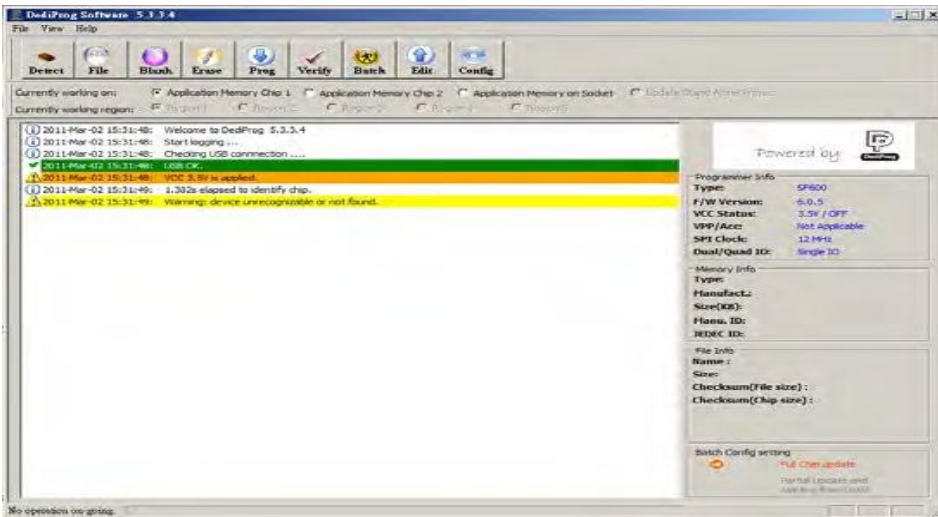
**Description :**

The SF600 is a high speed "in System Programming" programmer to update the SPI Flash soldered on board (In Circuit Programming) or in the socket adaptor (Off line programming). The programmer is easily controlled by the computer DediProg Software through the USB bus offering friendly interface and powerful features to users. SF600 combines the advantages of SF100, SF200 with additional improvements:

- High speed USB
- Higher SPI performances
- Stand Alone (Option)
- Support Dual and Quad IO serial flash mode
- Isolation free: the on board Serial Flash can be programmed without isolation circuit (DediProg IP) (contact DediProg for more information)

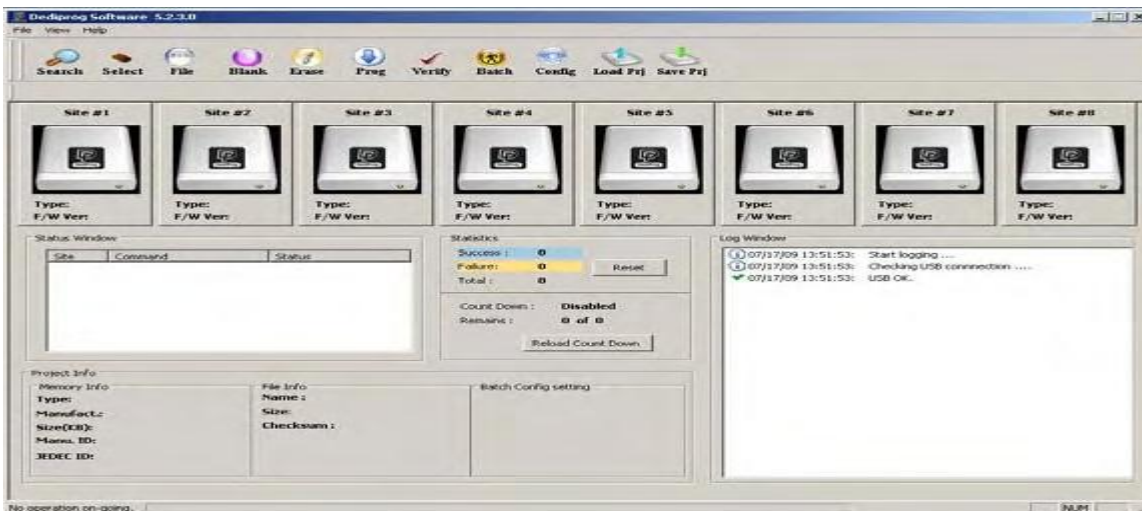
**- Engineering Graphic User Interface:**

for engineers and expert to access advanced features for development, repairing etc



**- Production Graphic User Interface:**

for operators in production to control multiple programmers and improve the throughput.



**- Command line interface:**

Customer software can control the SF600 programmers (Code Compiler, Production In Circuit Tester..)

```

C:\>
C:\>set path=%path%;"c:\program files\dediprogram\inc\dedipro programmer"

C:\>dpCmd -uc:\AM_55.bin
DpCmd 1.1.0, Engine Version: 2.0.33.
Last Built on Nov 22 2006
Copyright (C) 2006 DediProg. All rights reserved.

M25PE80 detected.

Auto sequences Operating, please wait ...
Time elapsed: 26.608s
Automatic program OK
Checksum(file): 0000
C:\>dpCmd -pc:\AM.bin -a0x010
DpCmd 1.1.0, Engine Version: 2.0.33.
Last Built on Nov 22 2006
Copyright (C) 2006 DediProg. All rights reserved.

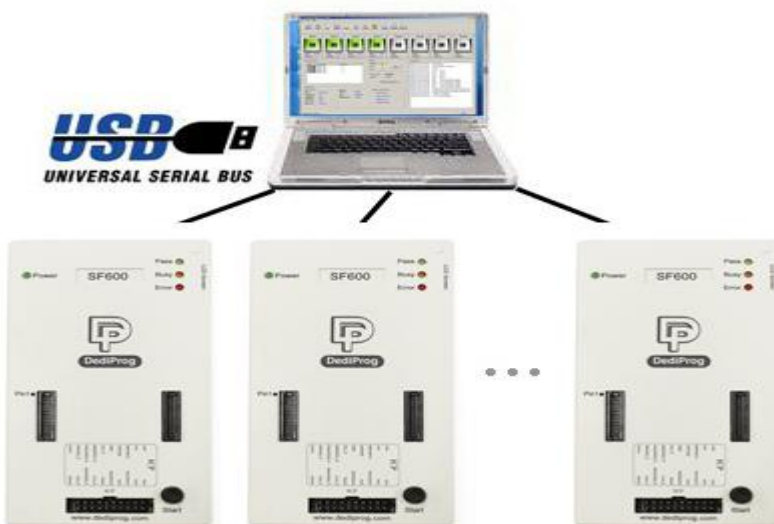
M25PE80 detected.

Reading, please wait ...
Time elapsed: 4.596s
Read OK
Erasing, please wait ...
Time elapsed: 15.422s
Erase OK
Programming, please wait ...
Time elapsed: 8.573s
Program OK
Checksum(file): 00aa
C:\>

```

### Features :

- USB High speed and high SPI performance
- In circuit Programming: Program on board SPI Flash
- Off line Programming: Program SPI Flash in the socket
- Stand alone mode (optional): Update the Serial Flash without computer
- Isolation Free: program the on board Serial flash without isolation circuitry
- Support Single, Dual and Quad IO serial communication (new serial Flash protocol)
- Control Application Reset, Isolation circuit through GPIO
- Program two Serial Flash memories
- Start button feature
- Signal conflict protections
- Multi-Programmeters Capability through USB
- Support Windows 2003 and above
- Support both 32 bit or 64 bit OS



## High performances (12MHZ, Quad IO)

USB Mode					
Density	8Mb	16Mb	32Mb	64Mb	128Mb
Program	4s	10s	12s	26s	52s
Verify	1s	2s	3s	4s	8s
Auto(Program+Verify)	5s	12s	15s	30s	60s

## Hardware :

SF600 is designed with ISP header, through an appropriate connector, users can connect the programmer and drive the SPI signals, supply the memory and control the controller or application status. Please refer to Table 1 for the SF600 2x10 header pin out.

DediProg also provides the **SF600 ISP Cable** which is used to connect the SF600 programmer to the 2X6 2.54mm ISP Pin Header on board, please refer to Table 2 for the SF600 ISP Cable 2x6 pin out.

**Table 1: SF600 ISP Header Pin Out (2x10)**

1	Vpp	CS2	2
3	CS1	Vcc	4
5	MISO/DQ1	Hold/DQ3	6
7	Wp/DQ2	CLK	8
9	GND	MOSI/DQ0	10
11	CS1_P	Reset	12
13	MISO/DQ1_P	CLK_P	14
15	Hold/DQ3_P	MOSI/DQ0_P	16
17	Wp/DQ2_P	CS2_P	18
19	GPIO1	GPIO2	20

Cable which is used to connect the SF600 programmer to the 2X6 2.54mm ISP Pin Header on board.

**Table 2: ISP Cable Connector Pin Out (2x6)**

1	Vpp	CS2	2
3	CS1	Vcc	4
5	MISO/DQ1	Hold/DQ3	6
7	Wp/DQ2	CLK	8
9	GND	MOSI/DQ0	10
11	NC	Reset	12

## Contents :

- 1x USB cable
- 1x SF600 Programmer
- 1x ISP cable (Model name: ISP-600-CB1-G)
- 1x SF600 Universal Adaptor (Model name: ADP-SF600-TO-SF100)
- CDROM with Software, specifications and user manual

**Hardware Requirement for ISP :**

- To have a clear understanding on the different ISP or backup boot methods and different reference schematics, please download our dedicated application notes: AN0103 and AN0106 in the documentation section

**Option Purchase :**

- Backup Boot Flash-SO8N
- Backup Boot Flash-Dual SO8N
- Backup Boot Flash-SO8W
- Backup Boot Flash-Dual SO8W
- Backup Boot Flash-SO16W
- Backup Boot Flash-Dual SO16W
- BBF SO8 Testclip
- BBF SO8 Testclip-Dual
- BBF SO16W Testclip
- ISP SO8 Testclip
- ISP SO16W Testclip
- Pitch adaptor board from 2.54mm to 1.27mm

**DISTRIBUTOR**



**FLASH TECHNOLOGY PTE LTD**  
**Website : [www.flashtech.com.sg](http://www.flashtech.com.sg)**  
**Email : [sales@flashtech.com.sg](mailto:sales@flashtech.com.sg)**  
**Tel : +65 6749 6168**